

How to request a place on a workshop:

Please indicate your choices by ticking the box beside each event on the booking form. Then complete your contact details below and return the form to us at ERCCIS with a cheque made payable to Cornwall Wildlife Trust for the appropriate amount.

Once your place on the course is confirmed, a poster containing further information on timings, what to bring and information on where to meet will be sent to you. The event details will also be posted on the website www.ercis.co.uk under the events section.

Name _____

(Organisation) _____

Your Address _____

Postcode _____

Your daytime telephone number (s) _____

Email address _____

Comments _____

We also have a list of introductory workshops, please contact ERCCIS for further details.

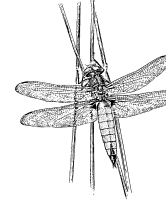
Surveying for Dragonflies Using Exuviae Identification

Date Saturday 10th July 2010

Location Windmill Farm, The Lizard

Leader Steven Jones (British Dragonfly Society)

Fee £25



Introducing the Field Guide to the larvae and exuviae of British Dragonflies.-Volume 1: Dragonflies by Steve Cham. This field based workshop will focus on the assessment of sites for their odonata interest using the non invasive technique of collecting and identifying dragonfly exuviae to provide information of real value for surveying purposes. We will also learn a great deal about conservation issues, the ecology of the different species as well as tips on identification of adults on the wing.



Environmental Records Centre for Cornwall and the Isles of Scilly

Five Acres, Allet, Truro, Cornwall, TR4 9DJ
tel: (01872) 240777 xtn 240 Fax: (01872) 225476
e-mail: sues@cornwt.demon.co.uk
website: www.ercis.co.uk

Advanced Biological Workshops and Field Trips 2010

This is the booking form for the more advanced workshops and field trips organised by the Environmental Records Centre for Cornwall and the Isles of Scilly (ERCCIS) and Duchy College, Rosewarne.

Do not be too put off by the advanced label, it usually means that the subject is studied in a little more detail or that it is an introduction to the less commonly studied species groups.

These courses are open to all interested in recording wildlife and are intended to help recorders improve their existing recording skills, learn new ones and share their expertise.

There is a small charge to help cover some of the costs in running these courses. We hope you find this represents good value for money and the workshops are worthwhile in assisting your recording efforts.

Should you wish to find out more about the Duchy College Certificate of Higher Education in Biological Recording, contact Duchy College.

If you would like further information on the workshops, on getting involved in biological recording or on the work of your Environmental Records Centre, please contact Sue Scott at the Records Centre Wildlife Information Service on (01872) 240777 xtn. 240.

We always welcome suggestions for future workshops or field trips; remember, these training events are for you!

Duchy College Rosewarne

Rosewarne, Camborne, Cornwall,
TR14 0AB. tel: 01209 722100
website: www.cornwall.ac.uk/duchy



Bird Survey Techniques

Date Friday 29th January 2010

Location Hayle

Leader Martin Rule

Fee £25



An introduction to the techniques used for bird survey and a chance to brush up on your identification skills at the same time, this field based course will be useful for those who would like to extend their bird watching for pleasure into more systematic recording. Martin Rule is a freelance ecologist and surveyor for the BTO with a wealth of local knowledge behind him. Born and raised in Cornwall and spending most of his working life in the county in conservation work, Martin is well placed to inform on both bird species and ecology as well as conservation issues.

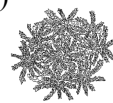
An Introduction to Recording Mosses and Liverworts

Date Tuesday 23rd and Wednesday 24th March 2010

Location Duchy College, Rosewarne

Leader Roy Jeffrey (British Bryological Society)

Fee £50



Cornwall has the most amazing bryophyte flora including some worldwide rarities. They can form an important part of assemblages for NVC work as well as being fascinating and photogenic for the most enthusiastic amateur recorder. This two day course intends to set anyone interested in identifying bryophytes either for their own interest or for professional work well on the way to achieving that aim with advice on equipment, techniques and where to get ongoing support. There will be a session in the lab as well as field work over the course of the two days. It is also an excellent chance to try out the new BBS field guide due to be published in 2010.

Advanced Grasses

Date Friday 2nd July 2010

Location North Cornwall

Leader Ian Bennallick

Fee £25



This field based workshop will look some of the more difficult to identify grasses in the field and includes discussion on habitat types and vegetation classification. It will be a good opportunity to explore the new Vegetative Key To The British Flora by John Poland and Eric Clement for those of us who are attempting its practical use in the field. We will be visiting a broad range of habitats throughout the day in the company of Ian Bennallick, BSBI Recorder for VC2, who has an extensive knowledge of the flora of Cornwall. We will also be trying out the new BSBI Grass handbook (No. 13).

Invertebrate Assemblages

Date Friday 9th July 2010

Location Cornwall Wildlife Trust Headquarters

Leader Dr Keith Alexander – Freelance Ecologist

Fee £25



The assessment of habitat quality and condition for invertebrates can often be overlooked due to time constraints and lack of specialist knowledge. This workshop will introduce a new tool that has been developed to help ecologists to quickly assess invertebrate habitat using standard sampling protocols and identification of key invertebrate groups. The new invertebrate assemblage classification aims to focus on structural features that are directly relevant to land management. The Invertebrate Species-habitat Information System (ISIS)-uses assemblage types that can be used to assess changes in site quality. This will be a practical workshop with an opportunity for everyone to try out this system on the CWT reserves close to Allet.

Workshop	Date	Tick Box
Bird Survey Techniques	Friday 29 th January 2010	
An Introduction to Recording Mosses and Liverworts	Tuesday 23 rd and Wednesday 24 th March 2010	
Advanced Grasses	Friday 2nd July 2010	
Invertebrate Assemblages	Friday 9th July 2010	
Surveying for Dragonflies Using Exuviae Identification	Saturday 10th July 2010	

